

BI Upgrade Plan – SQL 2005 to SQL 2008 R2 EXAMPLE

Servers:

ServerX, ServerY, ServerZ and ServerW– DOES NOT INCLUDE ServerV

ServerX (Hyper-V)	Pre Upgrade	Post Upgrade	Upgrade Notes
CPU/Memory	1 CPU / 8 GB RAM		
OS (not clustered)	Windows 2003 SP2 64 bit		Default local instance
SQL Server (not clustered)	2005 Dev Edition SP3		Update stats after upgrade!!!
SSRS	Yes		Check Data Sources OLE DB connections
SSIS	Yes-no packages deployed		None
SSAS	Yes		Check data source, reprocess cube
Visual SourceSafe	2005	2005	Should not be impacted
Replication	No	No	
Log Shipping	No	No	
Quest Spotlight	No	No	
Back Ups			Make back up of each database and cube
Maintenance Plans	NA		
Jobs	NA		
Databases			
User Accounts			
Service Accounts	LocalSystem, NetworkService and IMPACTANALYTIX\junderwood		
Drive Space	C: 8 GB+ free E: 40 GB+ free F: 55 GB+ free		verify at least 2 GB of available disk space on the system drive for install
Application and Connection Changes	SSAS, SSIS, SSRS, BIDS Projects, LinkedServers		SQL Server Native Client provider (SQLNCLI.1 to SQLNCLI10.1) and Analysis Services (MSOLAP.3 to MSOLAP.4)
3 rd party controls, .dlls, etc	None		
Upgrade Advisor Warnings	See below		

Database Server

Importance	When to fix	Description
	Before	Full-Text Search has changed in SQL Server 2008

NOT OK YET –Check Full-Text Search usage. Most likely it is used on the production apps but not reporting apps.

Instance or component:

SQL Server 2000 Data Transformation Services

Importance	When to fix	Description
	Advisory	<p>Consider revising packages to use the new features of the Lookup transformation.</p> <p>In SQL Server 2008 R2, the Lookup transformation includes additional capabilities, such as the ability to persist and share the cache. If your package uses lookups extensively, consider modifying the package to take advantage of the new features in the Lookup transformation.</p> <p>Show affected objects. (5 objects)</p> <p>Tell me more about this issue and how to resolve it.</p> <p><input type="checkbox"/> This issue has been resolved.</p>

Analysis Services

Importance	When to fix	Description
		No unresolved issues found!

Reporting Services

Importance	When to fix	Description
	Before	<p>SQL Server 2000 detected for remote report server database</p> <p>The report server database is hosted on a version of the Database Engine that is not supported by a SQL Server 2008 Reporting Services report server. Setup cannot upgrade a report server database that runs on a SQL Server 2000 Database Engine instance or a SQL Server 2005 Database Engine instance that runs in compatibility mode.</p> <p>Tell me more about this issue and how to resolve it.</p> <p><input type="checkbox"/> This issue has been resolved.</p>
	Before	<p>Reporting Services 2005 web service security group migration.</p> <p>The Report Server Web service group that is associated with this SQL Server instance will be deleted during the upgrade process. Before you upgrade, backup any custom Access Control Lists (ACLs) or users who belong to this group, and then transfer them to the SQL Server 2008 Report Server Windows group after upgrade successfully completes.</p> <p>Tell me more about this issue and how to resolve it.</p> <p><input type="checkbox"/> This issue has been resolved.</p>
	Before	<p>Object reference not set to an instance of an object.</p> <p>RSLICENSELIMITS</p>
	Advisory	<p>Custom ISAPI filters are configured on the report server website.</p> <p>Some ISAPI filters are configured for the Report Server or Report Manager websites. Upgrade can continue, but some functionality provided by those ISAPI filters could be missing.</p> <p>Tell me more about this issue and how to resolve it.</p> <p><input type="checkbox"/> This issue has been resolved.</p>
	Advisory	<p>Obsolete extensions were detected on the report server computer</p> <p>The report server is configured to use one or more extensions that were deprecated in a previous release. Upgrade can continue, but the deprecated functionality will no longer be available on the upgraded report server.</p> <p>Tell me more about this issue and how to resolve it.</p> <p><input type="checkbox"/> This issue has been resolved.</p>

OK - Database Compatibility Mode is 9.0. To upgrade SSRS, the database needs to be updated first to SQL 2008R2.

NOT OK YET –Check on the RSLICENSELIMITS message

OK- Report Server Web Service Group is just the Service Account, no external apps calling it.

OK- The report server is configured to use one or more extensions that have been discontinued in this release.

Discontinued extensions include: HTML OWC rendering extension and HTML 3.2 rendering extension. Upgrade can continue, but the discontinued functionality will no longer be available on the upgraded report server. The new version has new HTML rendering extension.

OK-Obsolete extensions, very straight-forward deployment of SSRS used here.

ServerZ(Real)	Pre Upgrade	Post Upgrade	Upgrade Notes
CPU/Memory	8 CPU / 32 GB RAM		
OS (not clustered)	Windows 2003 SP2 64 bit		
SQL Server (not clustered)	2005 Enterprise Edition SP2		Default local instance Update stats after upgrade!!!
SSRS	Yes		Check Data Sources OLE DB connections Back up encryption key, and config files
SSIS	Yes		ETL packages connections will need to be updated!!!
SSAS	Yes		Check data source, reprocess cube(s)
Visual SourceSafe	2005	2005	Should not be impacted
Replication	No	No	
Log Shipping	No	No	
UV Log Back Up Job	***UV		Plan this task with UV
Quest Spotlight	?		Plan this task with Ops
Back Ups			Make back up of each database and cube
Maintenance Plans			
Jobs	Scripted and saved in VSS		Scripted and saved in VSS
Notifications (Mail and Ops)	Yes		Check mail working
Databases			
User Accounts			
Service Accounts	LocalSystem		
Drive Space	C: 12 GB+ free E: 80 GB+ free F: 130 GB+ free		verify at least 2 GB of available disk space on the system drive for install
Application and Connection Changes	SSAS, SSIS, SSRS, BIDS Projects, UV's stuff, LinkedServers		SQL Server Native Client provider (SQLNCLI.1 to SQLNCLI10.1) and Analysis Services (MSOLAP.3 to MSOLAP.4)
3 rd party controls, .dlls, etc	?		
Upgrade Advisor Warnings	See below		

Database Server

Importance	When to fix	Description
	Before	Full-Text Search has changed in SQL Server 2008
	Advisory	Other Database Engine upgrade issues
	After	Non-integer constants are not allowed in the ORDER BY clause in 90 or later compatibility modes

In 80 compatibility mode and earlier, non-integer constants are allowed (and ignored) in the ORDER BY clause. In 90 or later compatibility mode, non-integer constants are not allowed in the ORDER BY clause.

[Show affected objects.](#) (1 objects)

[Tell me more about this issue and how to resolve it.](#)

This issue has been resolved.

NOT OK YET –Check Full-Text Search usage. Most likely it is used on the production apps but not reporting apps.
 NOT OK YET – check how this sp is used. msdb, sp_DTA_query_cost_helper_relational. Object contains statements using ORDER BY clause with constants.

Instance or component:

SQL Server 2000 Data Transformation Services

Importance	When to fix	Description
	Advisory	Consider revising packages to use the new features of the Lookup transformation.

In SQL Server 2008 R2, the Lookup transformation includes additional capabilities, such as the ability to persist and share the cache. If your package uses lookups extensively, consider modifying the package to take advantage of the new features in the Lookup transformation.

[Show affected objects.](#) (5 objects)

[Tell me more about this issue and how to resolve it.](#)

This issue has been resolved.

NOT OK YET –Update packages below:
 ETLSalesForceAccounts Instances: 1
 ETLUtilization Instances: 16
 ETLUtilizationCurrentDayRefresh Instances: 33
 ETLAssetLog Instances: 2
 ETLPatientSession Instances: 1

	After	Update provider names in connection strings to be compatible with SQL Server 2008 R2.
--	-------	--

In SQL Server 2008 R2, connection strings require a different value for some provider names. The value for the SQL Server Native Client provider is now SQLNCLI10. The value for the OLE DB Provider for Analysis Services is now MSOLAP. To automatically update these provider names, use the Package Upgrade tool to upgrade SQL Server 2005 packages. You can also manually update these names in Business Intelligence Development Studio.

[Show affected objects.](#) (74 objects)

[Tell me more about this issue and how to resolve it.](#)

NOT OK YET –This process should first be tested.

Advisory **Script tasks and Script components are automatically upgraded when you open or upgrade packages in SQL Server 2008 R2.**

In SQL Server 2008 R2, Integration Services uses Visual Studio Tools for Applications (VSTA) as its script environment. In earlier versions, the script environment was Visual Studio for Applications (VSA). Script tasks and Script components are automatically upgraded from VSA to VSTA when you open or upgrade packages in SQL Server 2008 R2.

[Show affected objects.](#) (53 objects)

[Tell me more about this issue and how to resolve it.](#)

NOT OK YET –This process should first be tested.

Analysis Services

Importance	When to fix	Description
		No unresolved issues found!

Reporting Services

Importance	When to fix	Description
	Before	SQL Server 2000 detected for remote report server database The report server database is hosted on a version of the Database Engine that is not supported by a SQL Server 2008 Reporting Services report server. Setup cannot upgrade a report server database that runs on a SQL Server 2000 Database Engine instance or a SQL Server 2005 Database Engine instance that runs in compatibility mode. Tell me more about this issue and how to resolve it. <input type="checkbox"/> This issue has been resolved.
	Before	Reporting Services 2005 web service security group migration.
	Before	Object reference not set to an instance of an object. RSLICENSELIMITS <input type="checkbox"/> This issue has been resolved.
	Advisory	Obsolete extensions were detected on the report server computer

OK - Database Compatibility Mode is 9.0. To upgrade SSRS, the database needs to be updated first to SQL 2008R2.

NOT OK YET –Check on the RSLICENSELIMITS message

OK- Report Server Web Service Group is just the Service Account, no external apps calling it.

OK- The report server is configured to use one or more extensions that have been discontinued in this release.

Discontinued extensions include: HTML OWC rendering extension and HTML 3.2 rendering extension. Upgrade can continue, but the discontinued functionality will no longer be available on the upgraded report server. The new version has new HTML rendering extension.

OK-Obsolete extensions, very straight-forward deployment of SSRS used here.

ServerY (VM)	Pre Upgrade	Post Upgrade	Upgrade Notes
CPU/Memory	1 CPU / 8 GB RAM		
OS (not clustered)	Windows 2008 SP2 64 bit		
SQL Server (not clustered)	2005 Enterprise Edition SP2		Default local instance Update stats after upgrade!!!
SSRS	Yes- but it does not work		NA
SSIS	Yes- no packages deployed		None
SSAS	Yes	Yes – no cube	
Replication	No	No	
Log Shipping	No	No	
Quest Spotlight	?		Plan this task with OPS
Back Ups			Make back up of each database and cube
Maintenance Plans	None		
Jobs	None		
User Accounts			
Databases	See above, also one cube Utilization		
Service Accounts	IMPACTANALYTIX\spotlight NetworkService		
Drive Space	C: 25 GB+ free		verify at least 2 GB of available disk space on the system drive for install
Application and Connection Changes	SSAS, SSRS, LinkedServers, BIDS projects		SQL Server Native Client provider (SQLNCLI.1 to SQLNCLI10.1) and Analysis Services (MSOLAP.3 to MSOLAP.4)
3 rd party controls, .dlls, etc	None		
Upgrade Advisor Warnings	See below		

Database Server		
Importance	When to fix	Description
+	Before	Full-Text Search has changed in SQL Server 2008

NOT OK YET –Check Full-Text Search usage. Most likely it is used on the production apps but not reporting apps.

Analysis Services		
Importance	When to fix	Description
+	✓	No unresolved issues found!

Reporting Services

Importance	When to fix	Description
❌	Before	SQL Server 2000 detected for remote report server database The report server database is hosted on a version of the Database Engine that is not supported by a SQL Server 2008 Reporting Services report server. Setup cannot upgrade a report server database that runs on a SQL Server 2000 Database Engine instance or a SQL Server 2005 Database Engine instance that runs in compatibility mode. Tell me more about this issue and how to resolve it. <input type="checkbox"/> This issue has been resolved.
❌	Before	Reporting Services 2005 web service security group migration. The Report Server Web service group that is associated with this SQL Server instance will be deleted during the upgrade process. Before you upgrade, backup any custom Access Control Lists (ACLs) or users who belong to this group, and then transfer them to the SQL Server 2008 Report Server Windows group after upgrade successfully completes. Tell me more about this issue and how to resolve it. <input type="checkbox"/> This issue has been resolved.
❌	Before	Object reference not set to an instance of an object. RSLICENSELIMITS <input type="checkbox"/> This issue has been resolved.
❌	Before	IIS backward compatibility components were not detected IIS components that provide information about the Reporting Services virtual directories were not found on this computer. Upgrade can continue, but the upgraded report server will not have URLs defined for it. Tell me more about this issue and how to resolve it. <input type="checkbox"/> This issue has been resolved.
⚠️	Advisory	Obsolete extensions were detected on the report server computer The report server is configured to use one or more extensions that were deprecated in a previous release. Upgrade can continue, but the deprecated functionality will no longer be available on the upgraded report server. Tell me more about this issue and how to resolve it. <input type="checkbox"/> This issue has been resolved.

Generated on: ANALYTICS, 8/11/2010 10:00:31 AM

OK–Note SSRS was not functional on this server and no reports were deployed. Uninstalled SSRS prior to upgrade, will install a working version during upgrade.

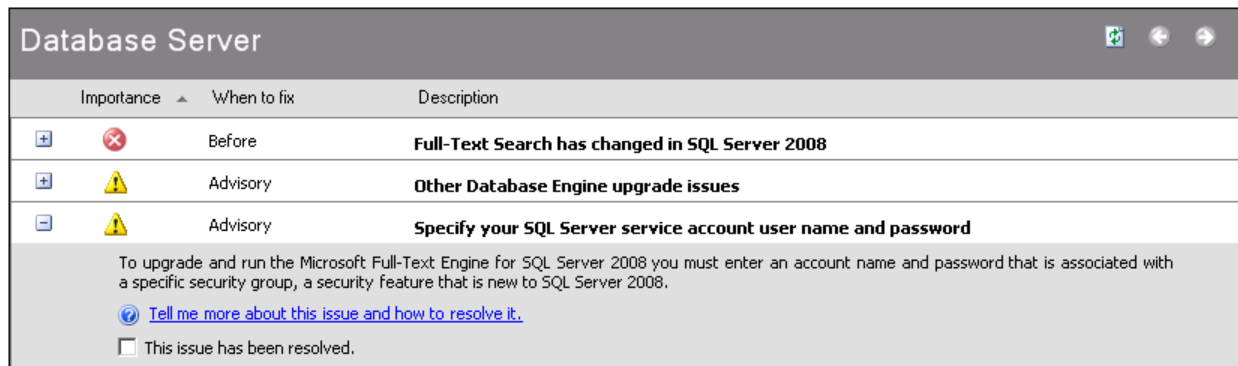
OK - Database Compatibility Mode is 9.0. To upgrade SSRS, the database needs to be updated first to SQL 2008R2.
NOT OK YET –Check on the RSLICENSELIMITS message

OK- Report Server Web Service Group is just the Service Account, no external apps calling it.

OK- The report server is configured to use one or more extensions that have been discontinued in this release. Discontinued extensions include: HTML OWC rendering extension and HTML 3.2 rendering extension. Upgrade can continue, but the discontinued functionality will no longer be available on the upgraded report server. The new version has new HTML rendering extension.

OK-Obsolete extensions, very straight-forward deployment of SSRS used here.

ServerW(?)	Pre Upgrade	Post Upgrade	Upgrade Notes
CPU/Memory	4 CPU / 8 GB RAM		
OS (not clustered)	Windows 2003 SP2 64 bit		
SQL Server (not clustered)	2005 Standard Edition SP2		Default local instance Update stats after upgrade!!!
SSRS	Yes		Check Data Sources OLE DB connections Back up encryption key, and config files
SSIS	No		
SSAS	No		
Replication	No	No	
Log Shipping	No	No	
Quest Spotlight	?		Plan this task OPS
Back Ups			Make back up of each database and cube
Maintenance Plans	None		
Jobs	None		
Databases			
User Accounts			
Service Accounts	Local System ./SQL User		
Drive Space	C: 30 GB+ free E: 90 GB+ free		verify at least 2 GB of available disk space on the system drive for install
Application and Connection Changes	SSRS, LinkedServers, BIDS projects		SQL Server Native Client provider (SQLNCLI.1 to SQLNCLI10.1) and Analysis Services (MSOLAP.3 to MSOLAP.4)
3 rd party controls, .dlls, etc	None		
Upgrade Advisor Warnings	See below		



Database Server

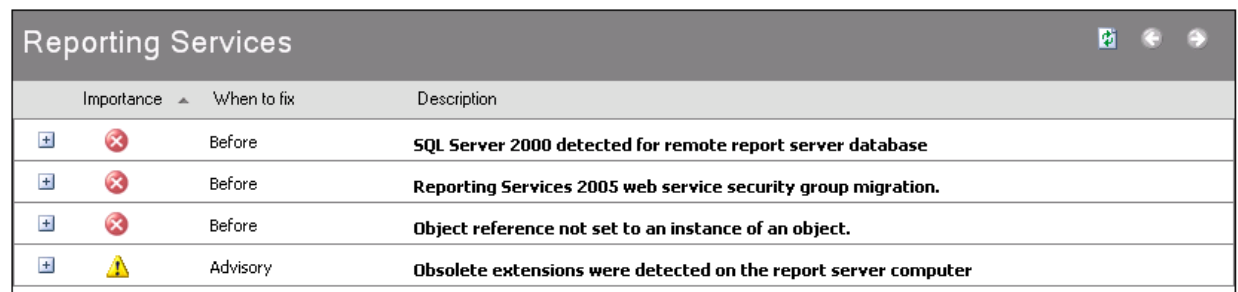
Importance	When to fix	Description
High (Red X)	Before	Full-Text Search has changed in SQL Server 2008
Medium (Yellow Triangle)	Advisory	Other Database Engine upgrade issues
Medium (Yellow Triangle)	Advisory	Specify your SQL Server service account user name and password

To upgrade and run the Microsoft Full-Text Engine for SQL Server 2008 you must enter an account name and password that is associated with a specific security group, a security feature that is new to SQL Server 2008.

[Tell me more about this issue and how to resolve it.](#)

This issue has been resolved.

NOT OK YET –Check Full-Text Search usage. Most likely it is used on the production apps but not reporting apps.



Reporting Services

Importance	When to fix	Description
High (Red X)	Before	SQL Server 2000 detected for remote report server database
High (Red X)	Before	Reporting Services 2005 web service security group migration.
High (Red X)	Before	Object reference not set to an instance of an object.
Medium (Yellow Triangle)	Advisory	Obsolete extensions were detected on the report server computer

OK - Database Compatibility Mode is 9.0. To upgrade SSRS, the database needs to be updated first to SQL 2008R2.

NOT OK YET –Check on the RSLICENSELIMITS message

OK- Report Server Web Service Group is just the Service Account, no external apps calling it.

OK- The report server is configured to use one or more extensions that have been discontinued in this release.

Discontinued extensions include: HTML OWC rendering extension and HTML 3.2 rendering extension. Upgrade can continue, but the discontinued functionality will no longer be available on the upgraded report server. The new version has new HTML rendering extension.

OK-Obsolete extensions, very straight-forward deployment of SSRS used here.

SAMPLE

Pre-Upgrade

Tasks

Status	Task	Notes
TO DO	Test SQL, SSIS, SSRS and SSAS upgrade on ServerY	
TO DO	Update and test ETL Lookup Transformations and test Cache Transform	
TO DO	Check NOLOCK syntax for 2008 version syntax in partitions and views	
TO DO	Databases in 9.0 Compatibility Mode	
TO DO	Back up and save SSRS encryption keys	
TO DO	Full Back Ups, all databases prior to upgrade	
TO DO	Before Snapshots of VMs	
TO DO	Install Microsoft Windows Installer (MSI) 4.5, .NET Framework 3.5 SP1, and the SQL Server Native Client on the target instances. Because these steps do not affect the application, they can occur before the actual upgrade deployment begins. Be aware that installing MSI 4.5 requires a restart of the server	

Upgrade

Status	Task	Notes
TO DO	Upgrade ServerWSQL Server and SSRS	
TO DO	Upgrade ServerZSQL Server, SSAS, SSIS, SSRS	

Post-Upgrade

SQL Server, SSIS, SSAS, SSRS

Status	Task	Notes
TO DO	Run update stats on all tables and indexes!	
TO DO	Check Back Up and Maintenance plans	
TO DO	Check mail notifications	
TO DO	Test XYZETL and Salesforce Export job and run several reports	
TO DO	UV processes	

BIDS 2008 Development Tools and Projects

Status	Task	Notes
TO DO	Back up BIDS 2005 projects	
TO DO	Developers need to install BIDS 2008 (side-by-side with 2005)	
TO DO	Upgrade BIDS projects with a project copy to upgrade it to 2008 in BIDS 2008	
TO DO	Also update connection strings in all of the BIDS projects	

Rollback Plan

Servers

Most likely Server Z would be the only server requiring roll back if the upgrade failed. The other server upgrades are very basic in nature and any VM machines can be restored from snapshots. In the scenario where ServerZ is rolled back, the following tasks would be performed to remain operational while the upgrade is debugged.

- Check disk space and restore only needed databases
- Install SQL Server 2005 named instance, side-by-side.
- Configure user and proxy accounts
- Configure any linked servers
- Restore all back up databases
- Run saved job scripts
- Create maintenance plans
- Configure SSRS, restore SSRS database and encryption key
- Update connection strings in SSRS and SSIS ETL packages
- Test XYZETL and Salesforce Export job and run several reports

Upgrade Notes

Concurrent Operating System Upgrades

Note that the SQL Server Upgrade Best practices paper suggested not simultaneously in-place upgrading operating systems.

SSRS

Back up the report server's symmetrical encryption key by using the SSRS 2000 or SSRS 2005 rskeymgmt utility. This utility is typically found in the <Drive :>\Program Files\Microsoft SQL Server\90\Tools\Binn\ directory if you are running SSRS 2005.

```
rskeymgmt -e -f<File> -p<Password>
```

Replace the <File> parameter with a valid file specification. This file will contain the symmetric key information. Also, replace the <Password> parameter with a password, which will be used to encrypt the symmetric key before it is stored in the file.

Back up the report server's databases by using any supported method for backing up a SQL Server database. For a default installation of SSRS 2005, make sure that the ReportServer and ReportServerTempDB databases have been backed up.

Back up critical configuration files related to SSRS 2000 or SSRS 2005, including the configuration files discussed in the next section of this chapter.

In SQL Server 2008, report items might be moved to correct overlapping boundaries when a report is viewed or exported to a renderer that does not support overlapping items

SSIS

SSIS 2005 packages can be upgraded using the following methods:

- In BIDS 2008, right-click an SSIS project's SSIS Packages folder and select Upgrade All Packages.
- Run the Upgrade Packages option from the SQL Server Management Studio Integration Services right-click context menu.
- Run `sisupgrade.exe` from the command line

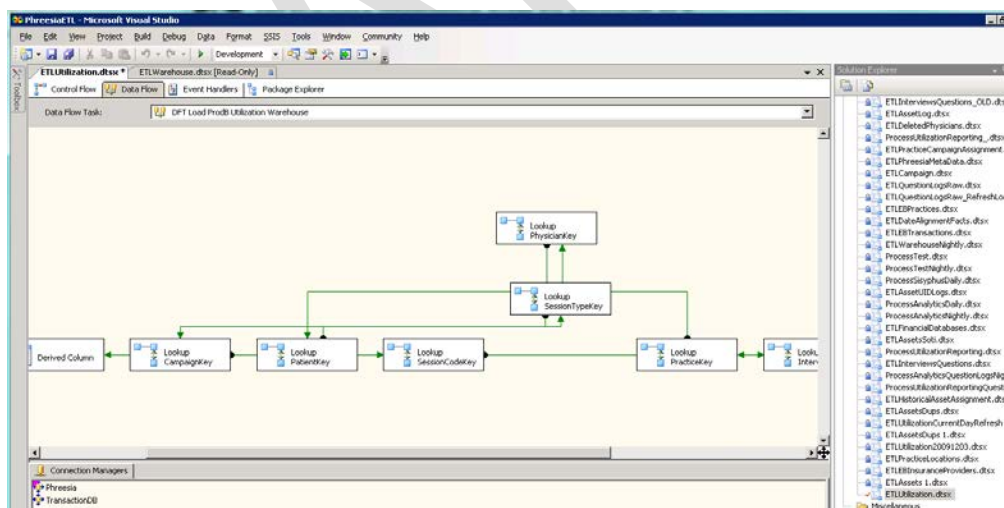
Note that the wizard will also run automatically when you open an SSIS project in BIDS 2008 and one or more SSIS 2005 packages are detected in the project's directory.

SSIS Transform Tasks

The Upgrade Wizard converts the SSIS 2005 Lookup transformation to its SSIS 2008 Lookup transformation equivalent. However, you will need to change your Lookup component to leverage the SSIS 2008 enhanced capabilities, which include using the Lookup Cache Transform and Cache Connection Manager to preload a cache and save it to disk (for use by Lookup Transforms in multiple packages).

For more information about Lookup components' new capabilities, see [Lookup Transformation](#) in SQL Server 2008 Books Online.

For more information about the Cache Transform, see [Cache Transform](#) in SQL Server 2008 Books Online.



SSIS Package Upgrade Wizard

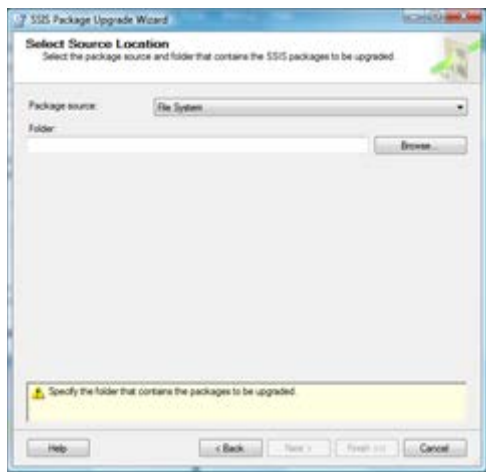
SSIS packages created in 2005 have to go through an upgrade process to run in 2008. The upgrade kicks in automatically once the package is loaded by the runtime - whether in the designer, dtexec, or through the API. To make the upgrade permanent, the package has to be saved (so although dtexec will upgrade the package when it's being executed, it will do so every time the package is run). Note that once the package is upgraded, it is no longer compatible with 2005.

The Package Upgrade Wizard which allows you to do batch upgrades. It can be launched in a number of ways:

- In SQL Server Installation Center, click Tools, and then click Upgrade Integration Services packages
- In BIDS, by right clicking on the "SSIS Packages" folder of an SSIS project and selecting "Upgrade All Packages"
- Running "ssisupgrade.exe" from the command line
- In SSMS connected to the Integration Services service, by right clicking on a package folder and selecting "Upgrade Packages..."

The wizard will also launch automatically if you open an SSIS project in BIDS and one or more 2005 packages are detected in the project directory.

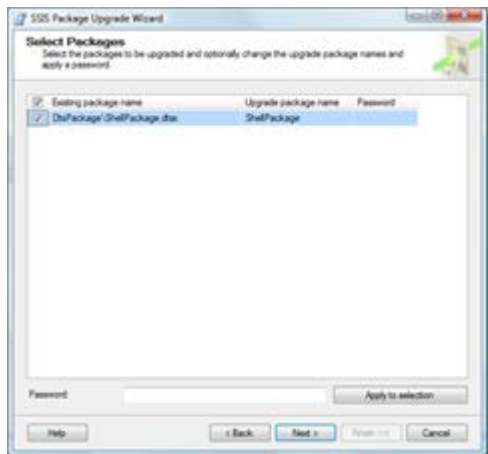
Running the wizard



The first thing to do is select the source location of the packages you want to upgrade. This will recursively pick up all packages from all sub directories. You can select a path from the file system, SSIS Service (Package Store), or SQL Server.

Things to note:

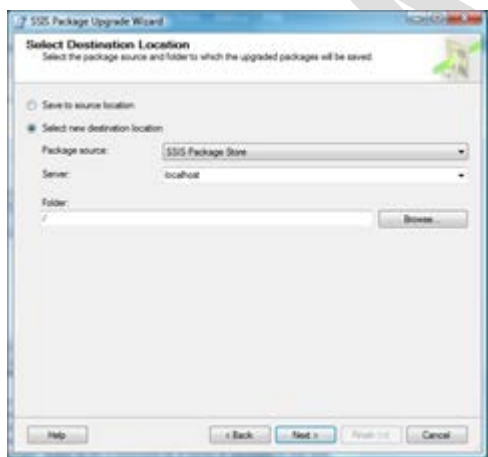
- When the wizard is launched from BIDS, the location is automatically set to the project directory
- The wizard can only connect to the 2008 SSIS Service (however, you can configure the 2008 service to manage packages stored on a 2005 server)



The next page of the wizard shows all packages contained under the source location you selected. Here you can select which packages you want to upgrade, and set passwords for packages with EncryptSensitiveWithPassword or EncryptAllWithPassword protection levels. Select multiple packages, type in the password in the lower box and click the "Apply to Selection" button to set a password on a bunch of packages in one shot.

Things to note:

- Both 2005 and 2008 packages will be listed here. Running the upgrade wizard on a 2008 package will succeed without changing anything.
- You can rename the package by changing the "Upgrade package name" value in the grid
- You can set the password directly in the grid



Once the packages have been chosen, the next page asks you to pick the output location. This can be:

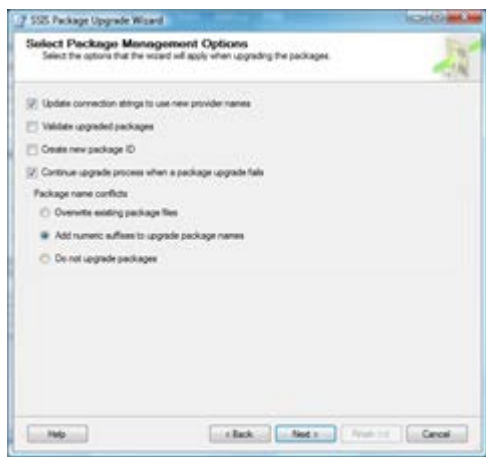
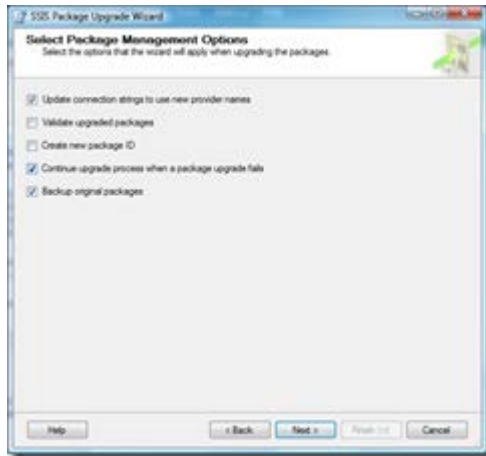
1. Same as the source location
2. File System
3. SSIS Service (Package Store)
4. SQL Server

If you choose "Save to source location", you'll be given the option to backup the packages on the next page of the wizard.

Things to note:

- Launching the wizard from BIDS will select "Save to source location" by default
- The wizard does not support changing the package protection level - which means you'll get an error if you're trying to save packages with "ServerStorage" to the file system
- The package hierarchy / directory structure is maintained between the source and destination

The options that appear on the next wizard page will depend on what you choose as your destination.



The options:

Update connection strings to use new provider names

If this option is selected (true by default), connection managers which use MS providers that were renamed in 2008 will be automatically updated to use the new values. These include SQL Native Client (SQLNCLI -> SQLNCLI10), and MSOLAP.3 -> MSOLAP.4.

See [blog post about SQL Native Client 10.0](#) for more details.

Validate upgraded packages

This will force validation of the package after it has been upgraded. If validation fails, the upgraded package will not be saved.

Create new package ID

If this option is checked, the package ID GUID will be regenerated after the package is upgraded.

Continue upgrade process when a package upgrade fails

Packages will be upgraded one by one. If this option is set, the wizard will stop when it encounters an error.

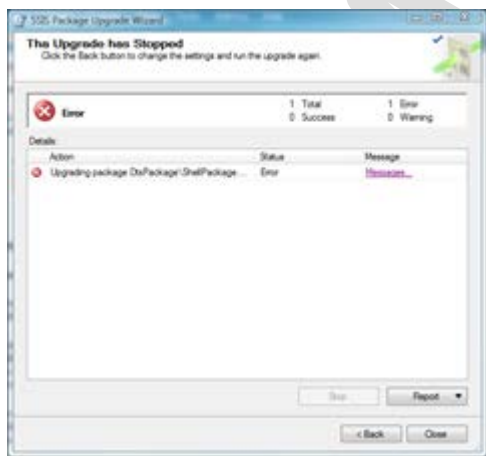
Backup original packages

This option appears when you are using the same source and destination locations. It will create a backup folder in the source directory (SSISBackupFolder), and copy the original packages into it to prevent them from being overwritten.

Package name conflicts

This option tells the wizard what to do if a package with the same name already exists at the destination. The options are:

- Overwrite existing package files
- Add numeric suffixes to upgrade package names
- Do not upgrade packages



The final page of the wizard displays the upgrade status. Each package will have its own line, and progress indicator. If a package has warnings (common if connection strings are being updated), or errors, you can click the "Messages..." link to see more details. Click the "Report" button to see messages for all of the packages.

Reasons why upgrade might fail

Package has validation errors

If your package doesn't validate before the upgrade, your upgrade may fail if you have the "Validate upgraded packages" option set. See the details above.

Password protected fields

If the package has a protection level that encrypts with a user key (and the wizard is run as a different user), the upgrade will fail with the following error:

Error 0xc0016016: : Failed to decrypt protected XML node "PackagePassword" with error 0x8009000B "Key not valid for use in specified state.". You may not be authorized to access this information. This error occurs when there is a cryptographic error. Verify that the correct key is available.

The best way to upgrade this package is to run the wizard with the account that created the package. If you don't mind losing the password information stored in the package, you can also upgrade it by opening it in the designer.

Packages with SQL Server configurations

The current CTP has a bug that causes the runtime to try to acquire connections for any SQL Server configurations in the package. If the connection fails, the package will fail to upgrade. This will hopefully be resolved for RTM.

Script upgrade failures

If your script task / component fails to upgrade for some reason (missing assemblies, early version of VSTA, compilation error), it will block the package upgrade. Manually upgrade the package by opening it in the designer, instead.